

## Specifications

		TR42
Measurement Channels		Temperature 1ch
Sensor		Thermistor ( External )
Measurement Unit		°C, °F
Measurement Range		-60 to 155 °C
Accuracy		Avg.±0.3 °C at -20 to 80 °C Avg.±0.5 °C at -40 to -20 °C , 80 to 110 °C Avg.±1.0 °C at -60 to -40 °C, 110 to 155 °C
Measurement Resolution		0.1 °C
Responsiveness		Thermal Time Constant: Approx. 30 sec. ( in air ) Approx. 4 sec. ( in agitated water ) Response Time ( 90% ): Approx. 80 sec. ( in air ) Approx. 7 sec. ( in agitated water )
Logging Capacity		16,000 readings
Recording Interval		Select from 15 choices: 1, 2, 5, 10, 15, 20, 30 sec. or 1, 2, 5, 10, 15, 20, 30, 60 min.
Recording Mode		Endless ( Overwrite oldest data when capacity is full ) or One Time ( Stop recording when capacity is full )
LCD Display Items		Measurements, Recording Status, Battery Life Warning, etc.
Communication Interfaces		Bluetooth 4.0 ( Bluetooth low energy )
Power		Lithium Battery ( LS14250 )
Battery Life *3		Approx. 1 month *4 to 1.5 years *5
Dimensions		H 62 mm x W 47 mm x D 19 mm
Weight		Approx. 45 g
Operating Environment		Temperature: -40 to 80 °C (-25 to 80 °C during wireless communication)
Waterproof Capacity		IP64: Splash proof *6 ( rated for use in daily life )
Accessories		Temperature Sensor TR-5106 Lithium Battery ( LS14250 ), Registration Code Label, Strap, User's Manual ( Warranty Included )
Data Collection Devices		Smartphone, Tablet
Software		ThermoREC ( iOS 9.0 or later, Android 4.4 or later ) ThermoStorage ( Coming Soon )

\*1: In the case of a 4-wire sensor, one wire will be left unused.

\*2: The temperature range shown here represents the operating environment of the logger, not measurement range.

\*3: Battery life varies depending upon multiple factors including ambient temperature, recording interval, usage of applications, and battery performance. All estimates are based on operations carried out with a new battery and are in no way a guarantee of actual battery life.

\*4: Estimated minimum battery life when recording data at an interval of 1 second and constant graph display in the app.

\*5: Estimated maximum battery life when recording data at an interval of more than 10 seconds and graph display in the app of less than 3 minutes a day.

\*6: This is the waterproof capacity of the data logger with the sensor connected.

The specifications listed above are subject to change without notice.

- Colors in the photos in this catalog may be different from real product colors.
- The specification and designs of the products in this catalog are true as of 2017/05. Specifications are subject to change without notice.
- Microsoft and Windows are registered trademarks of Microsoft Corporation USA and other countries.
- Company names and product names are trademarks or registered trademarks of each company.



2017. 05. 16308020003D (1st Edition)

# TR4 Bluetooth ThermoRecorder



**THERMALFLOW**  
TECHNOLOGIES

# TR4 + Mobile Device = Quick Anywhere Anytime Access

Auto Search via Bluetooth

Apps for Real-time Monitoring, Graphs and Auto-Upload

Share to Free Cloud Service "WebStorage Service"



## Bluetooth Data Logger

External Sensor for Quick Response

### TR42

Temperature 1ch ( External Sensor )  
 -60 to 155 °C  
 IP64 Splash proof (rated for use in daily life)  
 Optional Sensors Available



Dedicated Mobile Apps:

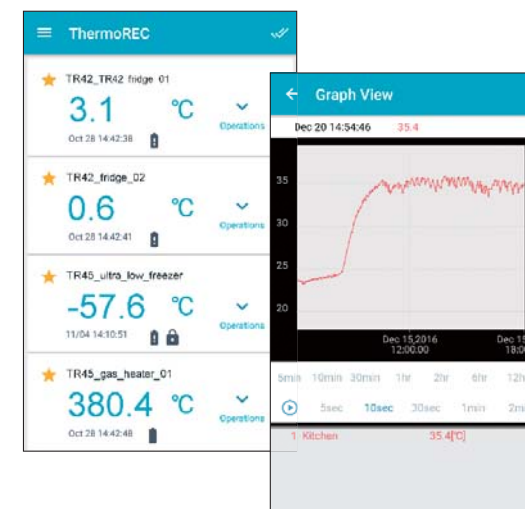
## ThermoREC & ThermoStorage

These two dedicated mobile apps make communication and data management a snap.

### ThermoREC \*

Allows for real-time monitoring on the graph and logger settings.

\* iOS 9.0 or later, Android 4.4 or later



### ThermoStorage (Coming soon)

Allows for one-step uploading of recorded data for a collection of loggers to T&D WebStorage Service.

